

MERCURE

HOTEL

WELLINGTON ABEL TASMAN



At the Mercure Wellington Abel Tasman Hotel, we take pride in ensuring your conference success.

We're experts at hosting business events

With four adaptable meeting spaces for up to 120 people, our naturally lit rooms on a dedicated floor are perfect for various events. Whether you're organising training days, board meetings, seminars or conferences - the space can be adapted to meet your requirements.

Backed by the support of our experienced conference and events team, we are committed to exceeding your expectations.

Whether you're looking for an event space for a day, a half-day or more, we will be happy to assist you with a package to suit your requirements.

Tailored Spaces and Services

- Our conference experience includes versatile catering options
- Discover a venue designed for your needs
- Light filled spaces
- Versatile room layout options
- Customisable menus
- One free car park for the conference facilitator

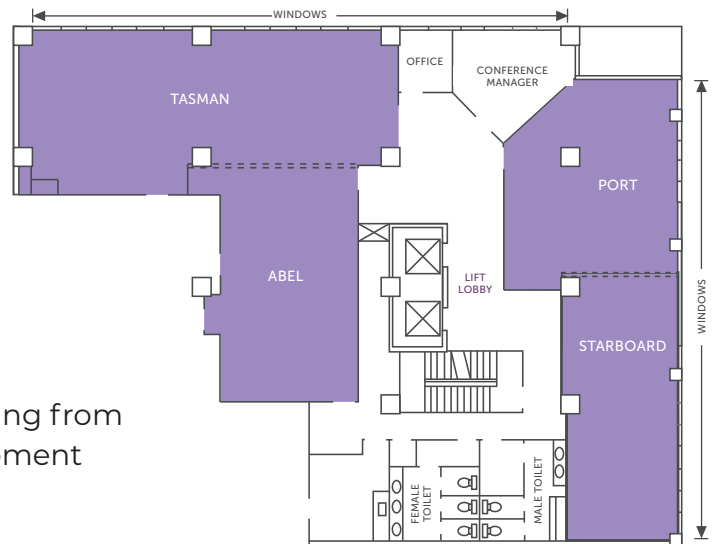
Accommodation

Located in the heart of Wellington, our accommodation options offer comfort, space and convenience complete with free Wi-Fi, room service and dedicated work spaces.

- Our team will tailor a residential conference package to suit your needs.
- Central, comfortable and value-packed in Wellington city.
- Various room configurations including Double Double, Twin and Triple.



Rooms	Theatre	Classroom	U shape	Boardroom	Banquet
Abel	50	30	25	30	30
Tasman	100	50	40	45	70
Abel+Tasman	150	60	-	-	100
Port	30	16	15	18	24
Starboard	40	25	25	28	30
Port+Starboard	80	45	30	35	50



Event and Conference Packages

Our premium day delegate packages offer everything from room hire and set-up to a delicious lunch, AV equipment and more.

Get in touch with our team to discuss your requirements. We will happily assist with a custom-made conference package to suit your budget and your requirements.

Customised Budget - Customised Service - Customised Menus