

## ABOUT

In the vibrant heart of the city, The Sydney Boulevard Hotel combines modern elegance with a highly sought-after location near the central business district. Generously sized accommodation offers free high-speed Wi-Fi and views of Sydney's sparkling harbour or city skyline. Spacious rooms provide a haven for families, while our Presidential Suite is known for its illustrious history of hosting celebrity guests.

## INFORMATION

The Sydney Boulevard Hotel features a total of 275 stylish rooms. All rooms are equipped with the best facilities:

- Individually-controlled heating and cooling
- Iron & ironing board
- LCD flat screen TV
- In-room safe
- Tea & coffee making facilities
- Hair dryer & makeup/ shaving mirror
- Complimentary Wi-Fi
- Large work space

## ROOM COUNT

- Deluxe King Room, Harbour View (67)
- Deluxe King Room, City Side (84)
- Deluxe Twin Room (12)
- Standard King Room (111)
- Presidential King Suite (1)

## SERVICES

- Gymnasium
- Luggage storage
- Non-smoking throughout
- Free WIFI
- Restaurant
- Lift
- Secure Undercover Parking
- Steam room
- Sauna
- Bar
- Wheelchair accessible

## THE VARD

The Vard is an ideal urban retreat for unwinding after a long day at work or enjoying a casual evening with friends. Indulge in a variety of classic cocktails, refreshing beers, and delectable pre-packaged bar bites.

## ARRIVAL

Check-in: 3 pm | Check-out: 11 am

## POINTS OF INTEREST

- Stanley Street (Wine & Dining)
- Hyde Park (Shopping Area)
- Woolworths (next to the hotel)
- Central Business District (10 min walk)
- Royal Botanic Garden (5 Min drive)
- Opera House (7 min drive)

## PARKING

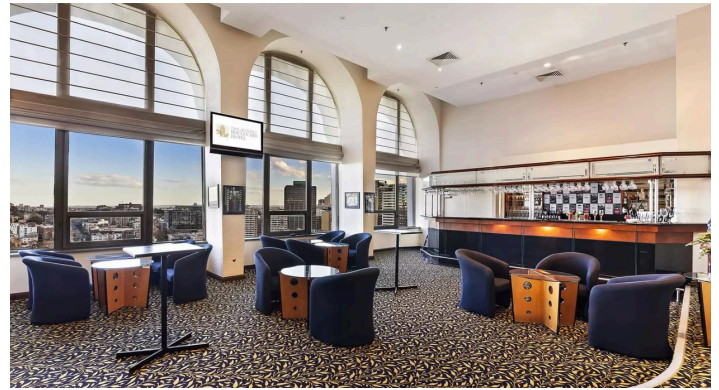
The Sydney Boulevard Hotel puts guests within an easy 20-minute drive of Sydney International Airport. Secure parking for 360 cars is available under the hotel at the discounted flat rate of AUD 25 for unlimited access over 24 hours.

## SEASONS CAFE

Breakfast buffets and mouthwatering Australian dishes.



# THE SYDNEY BOULEVARD HOTEL



## MEZZANINE

Venue	Area m <sup>2</sup>	Capacity	Shape	Banquet	Cocktail	Theatre	Classroom	Boardroom	Cabaret
Robinson	53 m <sup>2</sup>	40	15	40	35	35	24	14	32
Willian	45 m <sup>2</sup>	40	15	40	35	35	24	14	32
Combined	98 m <sup>2</sup>	80	36	80	60	72	54	28	64

## LEVEL 1

Grand Ballroom	351 m <sup>2</sup>	300	90	240	300	300	150	96	200
GB w/ Annex	418 m <sup>2</sup>	300	-	280	300	300	-	-	216
3/4 Ballroom	90 m <sup>2</sup>	210	70	160	210	210	112	73	168
1/2 Ballroom	90 m <sup>2</sup>	140	48	110	140	140	99	48	88
1/4 Ballroom	80 m <sup>2</sup>	70	24	50	70	70	54	28	40
Seasons Café	120 m <sup>2</sup>	160	-	-	-	-	-	-	-

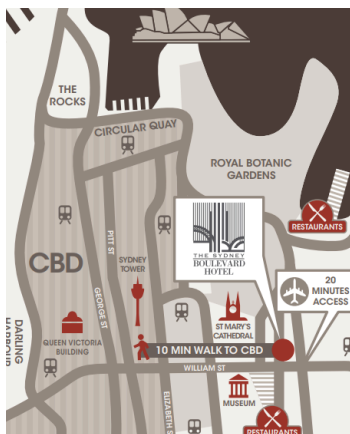
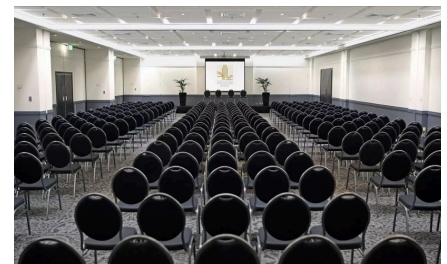
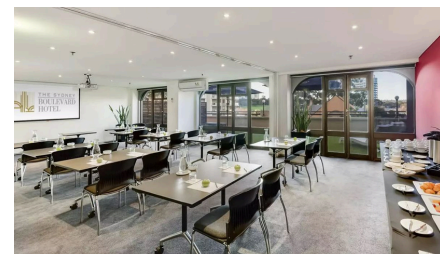
## LEVEL 2

Stanley	67 m <sup>2</sup>	40	26	40	40	40	26	24	32
Forbes	32 m <sup>2</sup>	8	-	-	-	-	-	8	-
Haig	39 m <sup>2</sup>	25	15	-	-	20	16	16	-

## TWENTY FIVE

Twenty - Five	110 m <sup>2</sup>	200	-	100	140	90	54	-	80
Twenty - Five	108 m <sup>2</sup>	200	-	-	60	-	-	-	-
Cocktail Bar									

Grand Ballroom - Max Capacity is 350 in Banquet | Classroom - 3 per table | Theatre - with wall closed, facing either long or short wall | Cabaret - 6 per table.



## LOCATION

Central Sydney Hotel close to the Opera House and Darling Harbour.

## PUBLIC TRANSPORT

The Sydney Boulevard Hotel is less than a 10-minute walk to the CBD, just a short stroll through Hyde Park. Located near various train stations including St. James, Museum, Town Hall & Kings Cross.

## SYDNEY AIRPORT

The Sydney Boulevard Hotel is approximately 12km away from the airport.

90 William Street, Sydney,  
New South Wales 2011  
Sydney Australia



sydneyboulevard.com.au



+ 61 293837222



admin@sydneyboulevard.com.au