

Where life lives with a *French Zest*

Embrace French luxury and sophistication
in the centre of *Sydney's CBD*

Bienvenue to Sofitel Sydney Wentworth

IMMERSE YOURSELF IN HERITAGE, CULTURE & ART

The hotel's rich history originated with Qantas in 1966; the Wentworth proudly stands as Australia's first international 5-star hotel. Sydney's iconic luxury hotel is ideally located in the heart of the city centre, amidst the bustling business, shopping districts and iconic landmarks.



Tailored Luxury and Comfort

DISCOVER OUR 436 ROOMS & SUITES

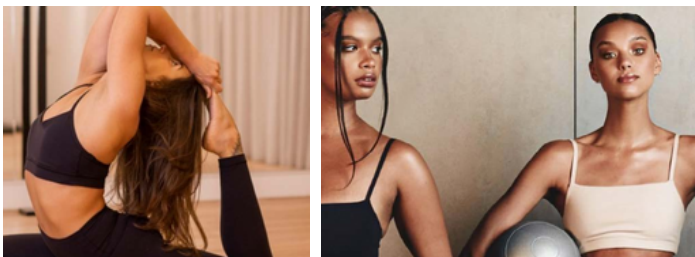
Gracefully curved along the terrace, offering a unique blend of luxury and comfort. Our innovative technology will enhance your stay, ensuring a seamless and memorable experience.

Distinctive features: • Sofitel MyBed™ • Sustainable Balmain Paris amenities • LED smart TV • Selected rooms & suites with Club Millésime access • Nespresso coffee machine • Luxurious marble bathrooms • Signature mini bar & in-room dining.

Sofitel Club Millésime

ESCAPE REALITY & LET REVELRY COMMENCE

An elevated, exclusive check-in experience, opening onto a tranquil and yet opulent space. Club members or those purchasing a day pass can relax, entertain or simply work from a warm eclectic lounge space with layers of soft furnishings & sophistication.



Health & Wellness Studio

ELEVATE YOUR WELLBEING

Whether you're an early riser looking to energise or prefer winding down with weights, our exclusive new wellness oasis is designed for you. This 2025, step into our new studio and leave the hustle and bustle behind.



TILDA

Celebrating the best of Australian produce and offering generous table sizes with an Australian take on classic drinks and a plush dining environment.



BAR TILDA

Welcome to bar tilda – where traditional drinking rituals meet Australian ingredients, flavours and nostalgic storytelling, all just a step off Phillip Street in the heart of Sydney's CBD.



DELTA RUE

The interiors will evoke the faded old-world elegance of Hanoi's Old Quarter. The dining room, seating 150, spills onto the lush terrace with capacity for an additional 60 diners.



WENTWORTH BAR

One of Sydney's most exciting al fresco bars on level 5, filled with fun, bright, easy-drinking cocktails and fresh, vibrant snacks.



Where inspirational encounters originate

ONE OF SYDNEY'S LARGEST HOTEL CONFERENCE & MEETING VENUES

Perfectly located in the heart of Sydney's CBD, Sofitel Sydney Wentworth presents our award-winning 5-star luxury hotel. Featuring the iconic pillar-less Wentworth Ballroom, accommodating up to 800 delegates, with cutting-edge audio-visual technology and expert event specialists. 15 elegant venues and a dedicated conference floor with an expansive foyer featuring spectacular heritage chandeliers and mirrored ceilings.

A Hotel of the Arts in the centre of Sydney's Nearby Attractions

NEARBY

Surrounding attractions include Sydney Harbour Bridge, Sydney Opera House, Circular Quay, the historic Rocks district, the Royal Botanic Garden, Art Gallery of New South Wales, the Domain and Hyde Park. Renowned for it's commitment to the arts, enjoy a cultural escape with a night at the Opera or Theatre. From international shopping, to famous beaches and architectural masterpieces, soak up the city's rich heritage.

TRANSPORTATION

10 kilometres (20 minute drive) from Sydney's Kingsford Smith International & Domestic Airport by limousine, rental car, taxi or shuttle. Explore the city and beyond by train, metro, light rail, ferry or bus, with Martin Place, Wynyard & Circular Quay Stations being the closest stops and only a few minutes away from the hotel entrance.

| Function Rooms | Area SQM | Dimension | Ceiling Height | Boardroom | Theatre | Classroom 3pax/trestle | Cabaret 8pax/round | Banquet 10pax/round | Maximum Round Tables | U-Shape 3 pax/trestle | Cocktail |
|------------------------|----------|---------------|----------------|-----------|---------|------------------------|--------------------|---------------------|----------------------|-----------------------|----------|
| LEVEL 3 | | | | | | | | | | | |
| Wentworth Ballroom | 629 | 22m x 28.6m | 5.3m | - | 800 | 462 | 400 | 500 | 50 | - | 800 |
| Perth Room | 198 | 22m x 9m | 5.3m | 60 | 263 | 138 | 136 | 170 | 17 | 63 | 340 |
| Sydney Room | 229 | 22m x 10.4m | 5.3m | 60 | 301 | 174 | 144 | 180 | 18 | 66 | 360 |
| Melbourne Room | 198 | 22m x 9m | 5.3m | 60 | 263 | 138 | 136 | 170 | 17 | 63 | 340 |
| Brisbane Room | 227 | 16.8m x 13.5m | 2.7m | 42 | 201 | 74 | 96 | 120 | 12 | 27 | 220 |
| Canberra Room | 55 | 9.8m x 5.9m | 2.7m | 24 | 52 | 30 | 32 | 40 | 4 | 27 | 40 |
| Level 3 Foyer | 468 | 36m x 10.8m | 2.7m | - | - | - | - | - | - | - | 500 |
| LEVEL 4 | | | | | | | | | | | |
| Adelaide | 165 | 20.9m x 7.9m | 2.4m | 50 | 140 | 66 | 64 | 80 | 8 | 54 | 140 |
| Executive Boardroom | 46 | 8m x 5.76m | 2.4m | 16 | - | - | - | - | - | - | - |
| LEVEL 5 | | | | | | | | | | | |
| Edwin Flack 1 Room | 57 | 8.2m x 5.6m | 3.2m | 24 | 50 | 33 | 32 | 40 | 4 | 30 | 50 |
| Edwin Flack 2 Room | 41 | 9.55m x 5.7m | 3.2m | 18 | 35 | 21 | 16 | 20 | 2 | 18 | 30 |
| Edwin Flack 1 & 2 Room | 98 | 17.75m x 5.7m | 3.2m | 42 | 85 | 54 | 48 | 60 | 6 | 42 | 80 |
| James Cook Room | 69 | 13.8m x 5m | 3.2m | 30 | 50 | 20 | 40 | 50 | 5 | 36 | 60 |
| Velvet Room | 59 | 9.15m x 6.5m | 3.2m | 12 | 20 | - | 16 | 20 | 2 | - | 30 |
| LEVEL 8 | | | | | | | | | | | |
| Wentworth Suite | 100 | - | - | 10 | - | - | - | - | - | - | 15 |
| Prestige Suite | 51 | - | - | 6 | - | - | - | - | - | - | - |

Sofitel Sydney Wentworth Capacity Chart 2024

SOFITEL SYDNEY WENTWORTH
 61/101 PHILLIP ST - 2000 - SYDNEY - AUSTRALIA
 TEL +61 (02) 9228 9188
 H3665@sofitel.com
 SOFITELSYDNEY.COM.AU

