



MÖVENPICK HOTEL AUCKLAND

Located in the heart of Auckland City, Mövenpick Hotel Auckland is the perfect base for any occasion. Just a 5-minute walk from Britomart Train Station and the Viaduct Harbour, our central location offers stunning views, versatile spaces, and premium comfort.

Our dedicated conference floor features eight well-appointed, air-conditioned meeting spaces with floor-to-ceiling windows that fill the rooms with natural light. We offer tailored seating plans to accommodate up to 200 delegates.

Planning a wedding, wellness event, or celebration? Explore our unique venues: BODA, our top-floor restaurant with stunning views; the open-air deck on Level 2; and Custom Lane, perfect for chic, ground-floor city-style hosting.

Refresh or unwind before or after your event in our premium guest rooms and suites. At Mövenpick Hotel Auckland, we provide everything you need to make your event seamless and memorable—all in one convenient location.

Hotel Facilities & Services

Gym | Virtual fitness room
Library | Business Centre
Concierge services
On-site Valet Parking
24 hour reception
24 hour room service
Complimentary wifi

Ph: +64 (0)9 3778920
Reservations: H1721-re1@accor.com

8 Customs Street East, Auckland,
New Zealand

BODA

BODA Restaurant sits at the top floor of the hotel, offering an expertly crafted modern Korean fusion menu, serving up vibrant, flavourful dishes paired with stunning panoramic views of Auckland's cityscape and harbour.



BODA restaurant bar area

The Deck

The Level 2 open air Deck is a versatile space, ideal for various events such as cocktail parties, wellness-gatherings, and private celebrations. The deck overlooks the Commercial Bay and Britomart areas.



The Deck on Level 2

Custom Lane

Custom Lane has a strong connection to the history of the city and links the hotel directly to the Britomart Precinct.

The dining atmosphere changes from café to bar as day shifts to night.



Custom Lane



Executive Suite Lounge

Rooms & Suites

Retreat to our rooms and suites prior or after your event and take in sweeping harbour or city views. Facilities include:

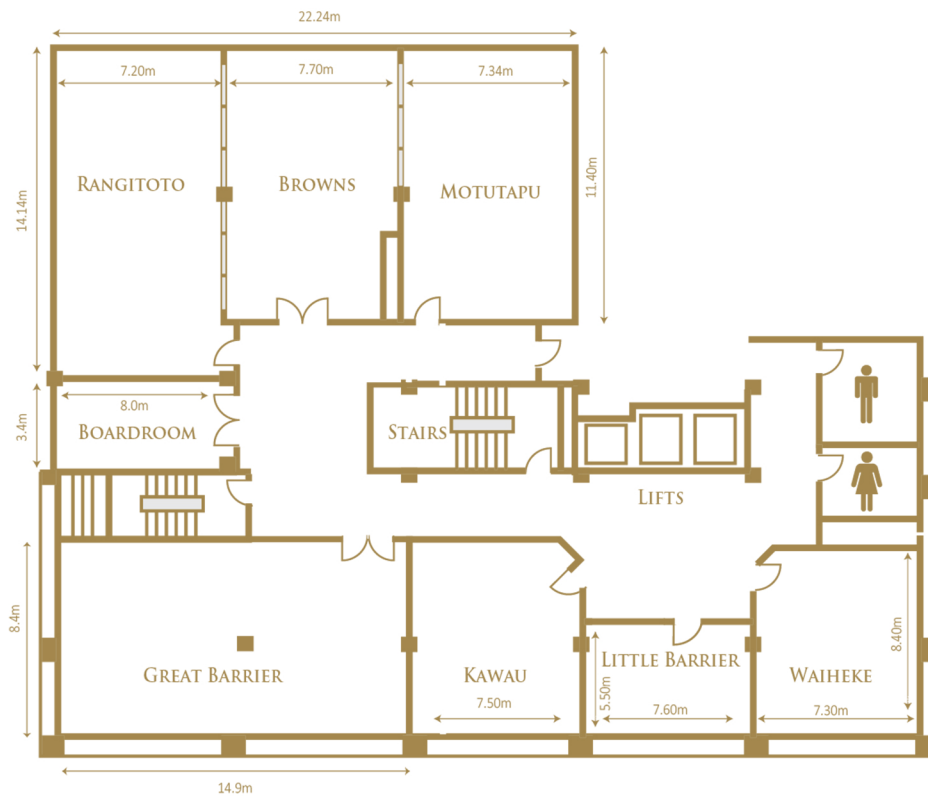
- Smart TV
- Bath robe and slippers
- Tea and coffee making facilities
- Yuni amenities
- Mini-bar
- Complimentary wifi



Chocolate Hour at BODA



Meetings & Events



MEETINGS & EVENTS SPACES

| ROOMS | THEATRE | U-SHAPE | BOARDROOM | CLASSROOM | CABARET | BANQUET | COCKTAIL | HEIGHT | AREA (SQM) |
|----------------|---------|---------|-----------|-----------|---------|---------|----------|--------|------------|
| WAIHEKE | 45 | 24 | 20 | 25 | 32 | 40 | 40 | 3 | 57 |
| KAWAU | 45 | 24 | 20 | 25 | 32 | 40 | 40 | 3 | 63 |
| LITTLE BARRIER | 25 | 14 | 14 | 15 | 14 | 16 | 40 | 3 | 42 |
| GREAT BARRIER | 80 | 26 | 20 | 80 | 72 | 80 | 100 | 3 | 125 |
| RANGITOTO | 80 | 40 | 40 | 40 | 56 | 70 | 100 | 3 | 105 |
| BROWNS | 70 | 30 | 30 | 30 | 40 | 50 | 80 | 3 | 89 |
| MOTUTAPU | 70 | 30 | 30 | 30 | 35 | 50 | 100 | 3 | 90 |
| HAURAKI GULF | 200 | - | - | 110 | 120 | 150 | 200 | 3 | 284 |
| BOARDROOM | - | - | 10 | - | - | - | - | 3 | 27 |
| THE DECK | - | - | - | - | - | 60 | 80 | - | 119 |
| CUSTOM LANE | - | - | - | - | - | 70 | 120 | 3 | 147 |

GO ON A VIRTUAL TOUR

Follow the QR code and go on a virtual tour of our spaces.

