

Where life lives with a *French Zest*

Embrace French luxury and sophistication
in the centre of *Sydney's CBD*

Bienvenue to Sofitel Sydney Wentworth

IMMERSE YOURSELF IN HERITAGE, CULTURE & ART

The hotel's rich history originated with Qantas in 1966; the Wentworth proudly stands as Australia's first international 5-star hotel. Sydney's iconic luxury hotel is ideally located in the heart of the city centre, amidst the bustling business, shopping districts and iconic landmarks.



Tailored Luxury and Comfort

DISCOVER OUR 436 ROOMS & SUITES

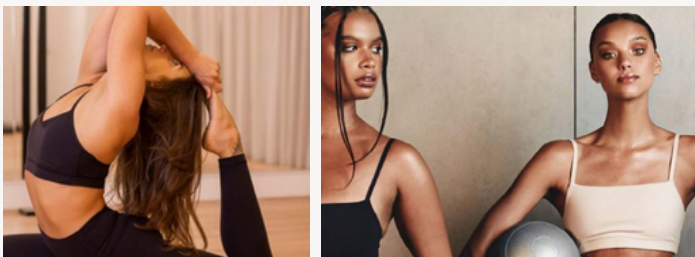
Gracefully curved along the terrace, offering a unique blend of luxury and comfort. Our innovative technology will enhance your stay, ensuring a seamless and memorable experience.

Distinctive features: • Sofitel MyBed™ • Sustainable Balmain Paris amenities • LED smart TV • Selected rooms & suites with Club Millésime access • Nespresso coffee machine • Luxurious marble bathrooms • Signature mini bar & in-room dining.

Sofitel Club Millésime

ESCAPE REALITY & LET REVELRY COMMENCE

An elevated, exclusive check-in experience, opening onto a tranquil and yet opulent space. Club members or those purchasing a day pass can relax, entertain or simply work from a warm eclectic lounge space with layers of soft furnishings & sophistication.



Health & Wellness Studio

ELEVATE YOUR WELLBEING

Whether you're an early riser looking to energize or prefer winding down with weights, our exclusive new wellness oasis is designed for you. Step into our studio and leave the hustle and bustle behind. Our serene environment is crafted to promote relaxation and healing.

Sydney's Regular Haunt to Meet, Eat & Entertain

TILDA AND BAR TILDA

Experience Sydney's new seafood grill and bar, celebrating the best local ingredients, offering ample seating for large groups, an Australian twist on classic drinks, and a sophisticated dining ambiance.



DELTA RUE

Vibrant Vietnamese-French restaurant on level 5. The interiors will evoke the faded old-world elegance of Hanoi's Old Quarter. The dining room, seating 150, spills onto the lush terrace with capacity for an additional 60 diners.

ROOFTOP WENTWORTH BAR

A revival of Sydney's famous evergreen rooftop terrace, located on level 5. Sydney's sprawling alfresco space filled with fun, bright easy drinking cocktails and fresh, vibrant snacks.



There are Meetings and then there are Magnifique Meetings

SYDNEY'S LARGEST HOTEL CONFERENCE & MEETING VENUES

Perfectly located in the heart of Sydney's CBD, Sofitel Sydney Wentworth presents our award-winning 5-star luxury hotel. Featuring the iconic pillar-less Wentworth Ballroom, accommodating up to 800 delegates, with cutting-edge audio-visual technology and expert event specialists. 15 elegant venues and a dedicated conference floor with an expansive foyer featuring spectacular heritage chandeliers and mirrored ceilings.



A Hotel of the Arts in the centre of Sydney's Nearby Attractions

NEARBY

Surrounding attractions include Sydney Harbour Bridge, Sydney Opera House, Circular Quay, the historic Rocks district, the Royal Botanic Garden, Art Gallery of New South Wales, the Domain and Hyde Park. Renowned for its commitment to the arts, enjoy a cultural escape with a night at the Opera or Theatre. From international shopping, to famous beaches and architectural masterpieces, soak up the city's rich heritage.

TRANSPORTATION

10 kilometres (20 minute drive) from Sydney's Kingsford Smith International & Domestic Airport by limousine, rental car, taxi or shuttle. Explore the city and beyond by train, metro, light rail, ferry or bus, with Martin Place, Wynyard & Circular Quay Stations being the closest stops and only a few minutes away from the hotel entrance.

Function Rooms	Area SQM	Dimension	Ceiling Height	Boardroom	Theatre	Classroom 3pax/trestle	Cabaret 8pax/round	Banquet 10pax/round	Maximum Round Tables	U-Shape 3 pax/trestle	Cocktail
LEVEL 3											
Wentworth Ballroom	629	22m x 28.6m	5.3m	-	800	462	400	500	50	-	800
Perth Room	198	22m x 9m	5.3m	60	263	138	136	170	17	63	340
Sydney Room	229	22m x 10.4m	5.3m	60	301	174	144	180	18	66	360
Melbourne Room	198	22m x 9m	5.3m	60	263	138	136	170	17	63	340
Brisbane Room	227	16.8m x 13.5m	2.7m	42	201	74	96	120	12	27	220
Canberra Room	55	9.8m x 5.9m	2.7m	24	52	30	32	40	4	27	40
Level 3 Foyer	468	36m x 10.8m	2.7m	-	-	-	-	-	-	-	500
LEVEL 4											
Adelaide	165	20.9m x 7.9m	2.4m	50	140	66	64	80	8	54	140
Executive Boardroom	46	8m x 5.76m	2.4m	16	-	-	-	-	-	-	-
LEVEL 5											
Edwin Flack Room 1	57	10.7m x 5.7m	3.2m	30	50	33	32	40	4	30	50
Edwin Flack Room 2	41	7.45m x 5.7m	3.2m	18	35	21	16	20	2	18	30
Edwin Flack Room 1 & 2	98	18.15m x 5.7m	3.2m	42	85	54	48	60	6	42	80
James Cook Room	69	13.8m x 5m	3.2m	30	50	20	40	50	5	36	60
Velvet Room	59	9.15m x 6.5m	3.2m	12	20	-	16	20	2	-	30
LEVEL 8											
Wentworth Suite	100	-	-	10	-	-	-	-	-	-	15
Prestige Suite	51	-	-	6	-	-	-	-	-	-	-

Sofitel Sydney Wentworth Capacity Chart 2024

SOFITEL SYDNEY WENTWORTH

61/101 PHILLIP ST - 2000 - SYDNEY - AUSTRALIA

TEL +61 (02) 9228 9188

H3665@sofitel.com

SOFITELSYDNEY.COM.AU

