

S O F I T E L



# Where life lives with a *French zest*

Discover this stunning address, blending art and french flair,  
situated in the heart of the *beautiful city of Wellington*

*Where aromas swirl*

## JARDIN GRILL RESTAURANT

Embark on a journey through modern-inspired cuisine, highlighted by local flavours and specialties. Sofitel's chefs and sommeliers create unforgettable gastronomic adventures, while our stunning dining rooms invite leisurely meals and provide a feast for the eyes.



## LA SERRE

Inspired by our botanical surrounds, La Serre is French for 'glasshouse' and is a whimsical embodiment of our locale, brought to life through chic design. Both opulent and relaxed and specialises in premium local gins, fine NZ wines and craft beers.



*Where senses awaken*

## SO FIT

With Sofitel's compelling commitment to wellbeing, we are dedicated to supporting your fitness goals with the exclusive & discreet So Fit gym. Sheer abundance of natural light, LCD TVs and latest entertainment system create a sublime workout experience.

So Fit features a full range of state-of-the-art equipment

- Treadmill • Powermill • Cross trainer • Bike • Rowing machine
- Leg, shoulder and chest press • Leg extension exercise machine

---

*A chic slumber awaits you*

## ROOMS & SUITES

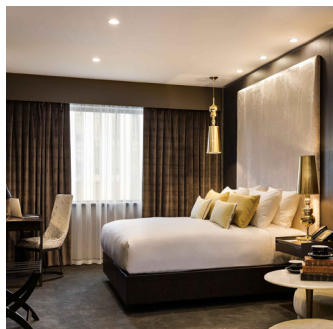
Delight in the sheer exuberance of our guest rooms & suites, featuring vintage gold and bronze tones complemented by a myriad of luxurious textures. Beautifully appointed for your ultimate comfort, each room presents as a private enclave in which to unwind. Select from stylish *Luxury Room* to the magnifique *Opera Suite*.

### Distinctive features

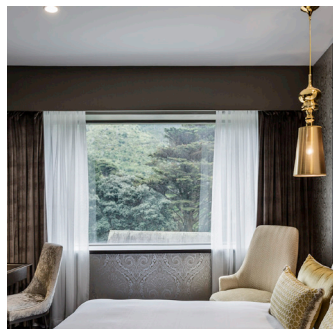
- King-size Sofitel MyBed™ • Balmain bathroom amenities
- Abundance of natural lights • Luxury chic design
- Selected rooms & suites with Club Millésime access

### Features & amenities

- Complimentary high-speed WiFi • Personal Nespresso machine
- LCD HD TV • Safe • Mini bar • BOSE sound system



Luxury Room



Junior Suite



Prestige Suite



Opera Suite

*Exclusive to our guests*

## VIP AMENITY

French fashion chic and classy.

Our VIP guests are gifted with a gorgeous handbag housing decadent treats made in-house.



---

*Where time stands still*

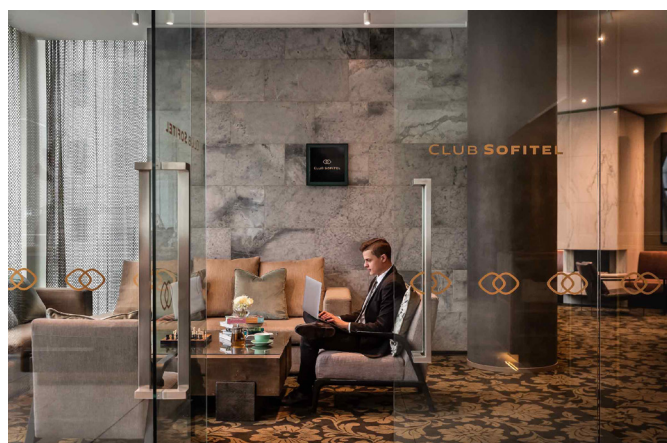
## CLUB SOFITEL

Club Sofitel offers everything you need for a seamless stay.

Sofitel's Club Lounge is one of a few in the city and provides you with Sofitel's signature French joie de vivre - the 'enjoyment of life' where you get to experience fine food and wine within a decadent decor whilst cosying up to our fireplace.

### Benefits include:

- Breakfast served at Jardin Grill • Le Goûter afternoon tea
- Apéro Chic wine tasting • Shoe shine service • Pressing of one item
- Packing & unpacking • 4pm late check-out (on request)





*Where minds meet*

## MAGNIFIQUE MEETINGS

With every moment planned to perfection and enhanced by Sofitel's impeccable service, each event is creatively imagined through a sophisticated French lens.

### Distinctive features

- 3 stylish meeting spaces
- Natural light
- Spacious pre-function area
- Dedicated conference floor
- Bespoke and refined service

MEETING ROOMS	SURFACE M <sup>2</sup>	HEIGHT M <sup>2</sup>	CLASSROOM	THEATER	U-SHAPE	BOARDROOM	DINNER
LADY NORWOOD	78	2.4	48	85	28	26	48
LADY NORWOOD 1	38	2.4	20	36	20	22	24
LADY NORWOOD 2	40	2.4	18	40	20	22	24
ROSA ROOM	50	2.4	30	50	20	24	32
MARSDEN BOARDROOM	36	2.4				12	12

## NEARBY

### Famous sites

The Beehive & Parliament Buildings, Wellington Botanical Gardens, Cable car, Sky Stadium, Mount Victoria, Wellington Zoo, the Zealandia Sanctuary Cuba Street

### Museum & gallery

Te Papa Museum, Weta Cave Museum

## TRANSPORT

 Wellington International Airport - WLF (8.5km)

## SOFITEL WELLINGTON

11 BOLTON STREET - WELLINGTON - 6011 - NEW ZEALAND  
TEL. +64 (04) 472 2001 - H9051@SOFITEL.COM

[WWW.SOFITEL-WELLINGTON.COM](http://WWW.SOFITEL-WELLINGTON.COM)

