

NO
VO
TEL

On-demand meeting rooms
and business facilities

NO VO TEL

CHRISTCHURCH
CATHEDRAL
SQUARE

DESTINATION & OVERVIEW

Staying at Novotel Christchurch Cathedral Square positions you in the heart of Christchurch CBD. The hotel allows you to be within walking distance of Te Pae, Riverside Market & the Terrace, allowing you to make your way around the city easily. In addition, the hotel is close to some of Christchurch's best eateries, theatres and shopping destinations, and iconic attractions such as the Cathedral and the city tram. The hotel includes 154 well-appointed guest rooms with a choice of king or twin beds.

We truly can cater to any need. The sky is the limit, and whether it's a small meeting or a large-scale multi-room event, we can tailor and accommodate to all.

We are located in the heart of the city, nearby to some of Christchurch's leading attractions, with lots to see and do.

Our unique spaces offer an ideal destination for conferences, workshops and training, seminars, product launches, cocktail parties, incentive programs and partner activities.

The hotel offers impeccable service, catering for up to 110 guests in well-appointed function rooms.



NO VO TEL

CHRISTCHURCH
CATHEDRAL
SQUARE

MEET WITH SUCCESS AT NOVOTEL CHRISTCHURCH CATHEDRAL SQUARE

Novotel Christchurch Cathedral Square with 6 dedicated meeting spaces, can accommodate up to 110 delegates.

- 4 flexible spaces for up to 110 guests in our largest room
- Hurunui Boardroom with in-built projector and screen
- On-site professional conference team
- Pre function area and bar
- Rooms with natural light
- On-site car parking
- Pillarless rooms offering clear visibility
- The Square Restaurant & Bar
- In Balance Gym

Technical Features

- Wireless internet access
- Purpose built in-room data projectors and drop screens
- Dimmer lights

Additional AV quotes available on request



1_ Conference Room Capacities

NOVOTEL

Make yourself at home with Novotel Christchurch Hotel. Our contemporary hotel in a prime central Christchurch location, only 60 meters from the new International Te Pae Convention Centre, offers access to a fully-equipped fitness centre and essential hotel amenities. Your bright, modern room gives you the space to work or relax - executive rooms have stunning views of the Southern Alps. You can enjoy fresh local produce at Novotel with a stylish restaurant offering buffet breakfasts and à la carte meals.

Waimakariri Room_

Largest room - 110 theatre style, 90 banquet style. It can be divided into two rooms with natural light with views over cathedral square. Permanent wall-mounted drop-down screen and ceiling-mounted data projector at each end of the room.

Rakaia Room_

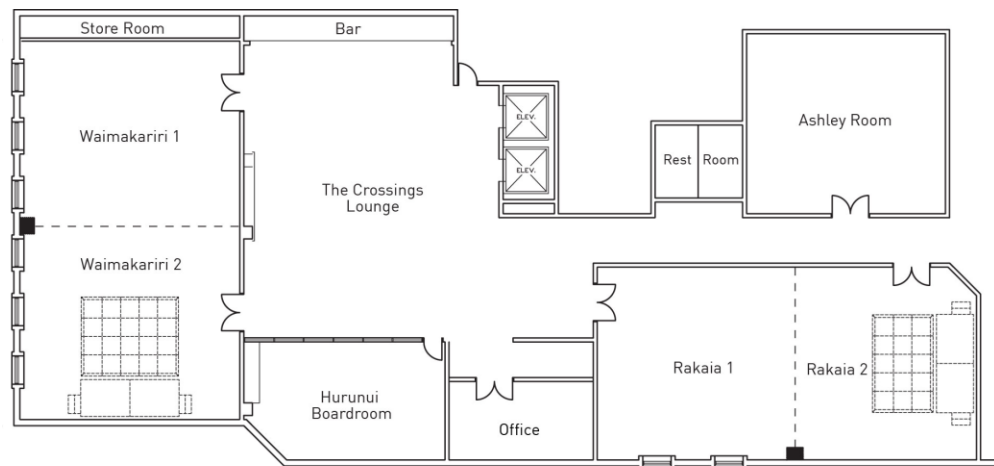
Second largest room - 100 theatre style, 80 banquet style. It can be divided into two rooms. Natural light and permanent wall-mounted drop-down screen and ceiling-mounted data projector at each end of the room. Ideal for presentations and workshops.

Hurunui_

Permanent Boardroom set up for 14 people. Large boardroom table with comfortable leather back chairs and self-serve espresso coffee and tea. Wall-mounted drop-down screen and ceiling-mounted data projector. Quiet and private room ideal for board

Ashley_

Seats for 30 people, theatre-style. Great as an additional breakout room, separate catering room or audio visual presentation that requires full black-out.



NOVOTEL

Conference Room Capacities_

Room	Height	M2	Theatre	Classroom	U- Shape	Boardroom	Cabaret	Banquet	Cocktail
Waimakariri Room	2.7	116	120	72	40	36	80	80	100
Waimakariri 1	2.7	53	45	30	20	18	32	32	40
Waimakariri 2	2.7	63	55	30	20	18	32	32	40
Rakaia	2.7	94	100	50	36	36	64	64	100
Rakaia 1	2.7	50	40	20	20	18	24	24	30
Rakaia 2	2.7	43	40	20	18	18	24	24	20
Ashley	2.7	36	30	12	12	18	18	16	20
Hurunui	2.7	38	-	-	-	14	-	-	-
Crossing foyer & Bar	2.7	-	-	-	-	-	-	-	100

NOVOTEL

Conference Room Hire_

Room	½ day Room Hire	1 day Room Hire
Waimakariri Room	\$750	\$900
Waimakariri 1	\$450	\$600
Waimakariri 2	\$500	\$650
Rakaia	\$550	\$750
Rakaia 1	\$350	\$500
Rakaia 2	\$300	\$450
Ashley	\$200	\$350
Hurunui	\$250	\$400

2_ Plan & Connect



Day Delegate Package Inclusions_

Half Day Delegate Package **\$59 per person**

Plenary Room Hire
Still & Sparkling water
Meeting@Novotel note pads, pens
Personalised set-up assistance

Catering

- Morning or Afternoon Tea
- Lunch in Square Restaurant

Audio Visual

- 1 x Data projector screen
- 1 x Whiteboard and pens
- 1 x Flip chart, paper and pens
- Conference WiFi

Full Day Delegate Package **\$85 per person**

Plenary Room Hire
Still & Sparkling water
Meeting@Novotel note pads, pens
Personalised set-up assistance

Catering

- Welcome Tea and Coffee
- Morning Tea
- Lunch in Square Restaurant
- Afternoon tea

Audio Visual

- 1 x Data projector screen
- 1 x Whiteboard and pens
- 1 x Flip chart, paper and pens
- Conference WiFi

Executive Day Delegate Package **\$99 per person**

Plenary Room Hire
Still & Sparkling water
Meeting@Novotel note pads, pens
Personalised set-up assistance

Catering

- Welcome Tea and Coffee
- Morning Tea or afternoon tea
- Lunch in Square Restaurant
- 30 minutes post-conference drink and nibbles

Audio Visual

- 1 x Data projector screen
- 1 x Whiteboard and pens
- 1 x Flip chart, paper and pens
- Conference WiFi

Plenary room allocated based on delegate numbers, specific rooms are not guaranteed until event order is issued.
Gourmet break items have been pre-chosen by our Chef to complement the lunch menu for the day.
Minimum numbers of 15 apply to DDP packages.

Audio Visual

Equipment	Each
One Whiteboard & Markers	Complimentary
One Flipchart (pens & paper)	Complimentary
Additional Flipchart	\$25
Data projector	Half Day \$100 / Full Day \$200
Sound System	Complimentary
Lectern	\$80
Laptop	Quote available on request

Equipment	Each
Handheld Microphone	\$100
Lapel Microphone	Quote available on request
LCD Television	Half Day \$100 / Full Day \$150
Pull up Screen	\$50
Laser Pointer	\$100
Dance Floor	\$80
Staging (1800mm x 2400mm)	\$100

THEMING & ENTERTAINMENT

Novotel Christchurch Cathedral Square pride themselves in making your event a success and offering that little extra 'WOW' factor. We would be delighted to assist with any requirements for event theming, room decoration, team building and leisure activities for guests and partners. Please consult our friendly events team for more information and suggestions.

Accommodation_

Novotel Christchurch Cathedral Square

Novotel is a premier 4½ star hotel designed to meet the needs of everyone, everywhere, anytime. Novotel represents comfort and innovative designs that offer an experience unlike any other.

The Novotel Cathedral Square offers 154 accommodation rooms including suites with alpine views, as well as special access rooms. Our rooms are 100% non-smoking.



Ibis Christchurch

Within walking distance to Novotel is the ibis Christchurch. Located in the central city, this modern 3.5 star hotel features 155 contemporary rooms, undercover guest parking and a contemporary Perch Dining + Bar

Inviting, modern and cosy, with a comfortable bed and a functional bathroom - the ibis room has everything you need for a pleasant stay. The room features air-conditioning, complimentary Wifi, and tea and coffee making facilities.



Catering_

Breaks

- Tea and coffee on arrival \$5.5 per person
- Tea and coffee with juice on arrival \$6.5 per person
- Morning/afternoon tea with one food item \$10.5 per person
- Morning tea/afternoon tea with two food item \$13.50 per person

Breakfast

- Express breakfast from \$28 per person
- Hot buffet breakfast from \$34 per person
- Plated hot breakfast from \$34 per person

Lunch

- Walk and Fork lunch from \$35 per person (minimum of 15 people)
- Buffet lunch served in the restaurant \$35 per person (minimum of 15 people)

Cocktail

- Food platter from \$60 per platter (serves approx 5-10 people)
- Canapé cocktail package from \$16 per person for 45 minutes of service

Dinner

- 2 course serve plated dinner from \$55.00 per person (minimum of 10 people)
- 3 course serve plated dinner \$65 per person (minimum of 10 people)
- Buffet \$65 per person (minimum of 20 people)

Dinner Package

- **From \$89 per person, including canapés, buffet or plated dinner option, room hire and equipment.**

3_ Menu Options

Day Delegate

Monday menu_

On Arrival_

- Freshly brewed coffee
- Dilmah tea selection

Morning Tea_

- Sushi selection (GF, DF, NF, V, VG)
- Freshly brewed coffee
- Dilmah tea selection

Lunch_

Soup

- Harira Moroccan soup (GF, DF, V, VG)
- Rosemary olive oil toasted pita bread (DF, V)

Salads section

- Fattoush salad with crispy sumac pita (DF, V, VG)
- Chickpea salad with capsicum and cucumber (GF, DF, V, VG)

Hot selection

- Lebanese Lamb kofta with pumpkin hummus, zattar and pickled red onion (GF, DF)
- Mediterranean chicken tagine (GF, DF)
- Falafel with tahini dressing and sumac (GF, V)
- Herb couscous with roast vegetables (V)

Sweets station

- Home made baklava with rose water syrup (V)
- Fruit platter with raspberry coulis (GF, DF, NF, V, VG)

Afternoon tea_

- Classic scones with jam and cream (V)
- Freshly brewed coffee
- Dilmah tea selection

Dietary Restrictions

Dietary: Df: Dairy free Nf: Nut free V: Vegetarian Vg: Vegan Gf: Gluten free
Please advise our events team of any other allergies or dietary requirements.





Day Delegate

Tuesday menu_

On Arrival_

- Freshly brewed coffee
- Dilmah tea selection

Morning Tea_

- Mini cheddar and chives scones (V)
- Freshly brewed coffee
- Dilmah tea selection

Lunch_

Soup

- Tomato and basil soup (GF, V)
- Garlic bread (V)

Salads section

- Caprese salad with balsamic glaze (GF, V)
- Caesar salad with soft boiled eggs and croutons (V)

Hot selection

- Grilled chicken Alfredo
- Grandma's Italian meatball with rich tomato sauce (GF, DF)
- Parmesan crumbed fried mushroom with sundried tomato, olives and salsa verde (V)
- Penne pasta (DF, V)

Sweets station

- Traditional la Donatella tiramisu (V)
- Fruit platter with raspberry coulis (GF, DF, NF, V, VG)

Afternoon tea_

- New York brownie with caramel sauce
- Freshly brewed coffee (V)
- Dilmah tea selection

Dietary Restrictions

Dietary: Df: Dairy free Nf: Nut free V: Vegetarian Vg: Vegan Gf: Gluten free
Please advise our events team of any other allergies or dietary requirements.



Day Delegate

Wednesday menu_

On Arrival_

- Freshly brewed coffee
- Dilmah tea selection

Morning Tea_

- Quiche with caramelised onion (V)
- Freshly brewed coffee
- Dilmah tea selection

Lunch_

Soup

- Carrot and coriander soup (GF, DF, V, VG)
- Garlic naan (V)

Salads section

- Lettuce, tomato and mint salad (GF, DF, V, VG)
- Cucumber raita (GF, V)

Hot selection

- Rich butter chicken (GF)
- Vegetable jhalfrezi (GF, DF, V)
- Vegetable bhaji (GF, V)
- Cumin scented basmati rice (GF, DF, V, VG)

Sweets station

- Apple strudel with warm custard (V)
- Fruit platter with raspberry coulis (GF, DF, NF, V, VG)

Afternoon tea_

- Selection of home baked cookies (V)
- Freshly brewed coffee
- Dilmah tea selection

Dietary Restrictions

Dietary: Df: Dairy free Nf: Nut free V: Vegetarian Vg: Vegan Gf: Gluten free
Please advise our events team of any other allergies or dietary requirements.



Day Delegate

Thursday menu_

On Arrival_

- Freshly brewed coffee
- Dilmah tea selection

Morning Tea_

- Croque monsieur
- Freshly brewed coffee
- Dilmah tea selection

Lunch_

Soup

- Spiced pumpkin soup (GF, DF, V, VG)
- Roti (V)

Salads section

- Vermicelli noodle salad with mint (GF, DF, V, VG)
- Chicken salad with miso dressing

Hot selection

- Black pepper beef stir-fry
- Baked coconut chicken with crispy shallots (GF, DF)
- Veggie Pad Thai with broccoli and sprouts (V)
- Steamed rice (GF, DF, NF, V, VG)

Sweets station

- Banoffee pie (V)
- Fruit platter with raspberry coulis (GF, DF, NF, V, VG)

Afternoon tea_

- Caramel cookie slice
- Freshly brewed coffee
- Dilmah tea selection

Dietary Restrictions

Dietary: Df: Dairy free Nf: Nut free V: Vegetarian Vg: Vegan Gf: Gluten free
Please advise our events team of any other allergies or dietary requirements.

Day Delegate Friday menu_

On Arrival_

- Freshly brewed coffee
- Dilmah tea selection

Morning Tea_

- Pork sausage roll
- Freshly brewed coffee
- Dilmah tea selection

Lunch_

Soup

- Creamy potato and chive soup (GF, V)
- Baked bread rolls (V)

Salads section

- Red cabbage slaw with chipotle (GF, DF, V)
- Mixed garden salad with honey mustard (GF, V)

Hot selection

- Texas style beef brisket with chimichurri and pickled red onion
- BBQ chicken wings with smoky sauce
- Cajun Grilled haloumi and mixed vegetable skewers (GF, V)
- Seasoned potato wedges (DF, V, VG)

Sweets station

- Selection of cheesecake (V)
- Fruit platter with raspberry coulis (GF, DF, NF, V, VG)

Afternoon tea_

- Lamingtons with vanilla cream (V)
- Freshly brewed coffee
- Dilmah tea selection

Dietary Restrictions

Dietary: Df: Dairy free Nf: Nut free V: Vegetarian Vg: Vegan Gf: Gluten free
Please advise our events team of any other allergies or dietary requirements.





Breakfast_

Plated Breakfast Option_ \$34 per person

Served to Table

- Freshly brewed tea & coffee
- Fruit juice
- Selection of danishes, muffins and croissants

Please make a selection from one of the following to be served to all guests:

- Eggs Benedict served on toasted English muffin w/ bacon, served with hollandaise sauce
- Poached eggs w/ smoked salmon, wilted spinach & potato rosti, served with hollandaise sauce
- Breakfast sausage, crispy bacon, hash browns, scrambled eggs, grilled tomato & sautéed mushrooms

Express Breakfast_ \$28 Per Person

- Freshly brewed tea & coffee
- Fruit juice
- Selection of Danish pastries & muffins
- Ham & cheese filled croissants
- Bacon & egg sliders with tomato relish
- Muesli yoghurt cups
- Sliced seasonal fruit platter
- Dried fruits and nut selection



Breakfast_

Buffet Breakfast_ \$34 per person

- Buttermilk pancakes w/ maple syrup (V)
- Breakfast sliders w/ smoked ham & cheddar (GF)
- Scrambled eggs
- Breakfast sausage
- Bacon
- Grilled mushrooms
- Hash Browns
- Fresh fruit salad w/ mixed seasonal fruit
- Muesli cup w/ honey yoghurt & mixed berry compote
- Mixed Danishes & croissants (V)
- Chia seed & fresh seasonal fruit puddings (GF, DF, V, VG)
- Freshly brewed tea & coffee
- Fruit juice



Breaks_

Freshly Brewed Tea & Coffee _

\$5.50 per person

- Freshly brewed coffee w/ a selection of teas
- A basket of whole seasonal fruit

Morning or Afternoon Tea Break_

\$10.50 per person

- Freshly brewed coffee w/ a selection of teas
- Choose one savoury or sweet item from the following selection

Savoury items_

- Croque monsieur
- Bacon & egg muffin with onion relish and chives (GF, NF)
- Roasted tomato basil & ricotta toast with balsamic glaze (V)
- Cheese and onion twist (V)
- Mini cheddar & chives scones (V)
- Brioche falafel sliders with pumpkin hummus & relish (V)
- Pork sausage roll
- Quiche with caramelised onion (V)
- Sushi selections (GF, DF, NF) V, VG available

Sweet items_

- Lamington with vanilla cream (V)
- Tiramisu cake (V)
- Cookie caramel slice (V)
- Mini Pavlova with cream and berry coulis (V)
- New York brownie with caramel sauce (V)
- Seasonal fruit skewers (GF, DF, NF, V, VG)
- Classic scones with strawberry and cream (V)
- Selection of home baked cookies (V)
- Portuguese custard tarts (V)



Alternate Daytime Catering_

Walk and Fork Menu \$35 per person

- Chefs selection of finger sandwiches (VG, *GF available*)
- Fresh fruit platters (V, VG, DF, GF)

Please make a selection from one of the following to be served to all guests:

- Penne pasta w/ bacon, olives & spinach in a tomato ragout (GF, DF, *VG available*)
- House made gnocchi w/ mushroom & caramelised onion (VG, GF, *DF available*)
- Orecchiette w/ broccoli, pine nuts & pork sausage (*VG available*)
- Green chicken curry w/ beans, charred eggplant & jasmine rice (*DF, GF, VG available*)
- Five spice calamari w/ croquette & lemon aioli (DF, *GF available*)
- Butter chicken w/ fresh naan, served on rice (*GF available*)
- Vegetable jungle curry on coconut rice (GF, DF, VG, V)
- Pad Thai noodles (DF, VG)
- Moroccan lamb & chickpea stew w/ tahini & mint yoghurt (GF, *DF available*)
- Vietnamese chicken & noodle salad, herbs, soy & ginger dressing (DF)
- Caesar salad w/ bacon lardons, croutons & shaved parmesan (DF, *GF available*)
- Thai beef salad, fresh herbs, seared sirloin, naan jim (DF)
- Tempura battered fish w/ rustic fries, tartare (DF)

**Selection served as individual portions*

Additional lunch options are available on request and include:

A La Carte lunch (main and dessert) \$40 per person, maximum 15 people

Buffet lunch \$35 per person, minimum 15 people

**Served in the hotel restaurant*



Dinner Buffets _

(Minimum of 20 guests) \$65 per person

Bread basket_

- olive oil, unsalted butter

Salads_

- Curried kumara, cashew nut & date (GF, DF)
- Tomato, bell peppers, basil (GF, DF, V, VG)
- Rocket, parmesan cheese, pear & balsamic dressing (GF, V)
- Tossed green leaves, salad mix, chive dressing (GF, DF, V, VG)

Seafood Selection_

- Steamed prawn, light chilli & lime dressing (GF, DF)
- Garlic poached green lip mussels, chilli & coriander marinate (GF, DF)
- Shrimp & crab salad, sauce Marie Rose (GF, DF)

Hot Selection_

- Balsamic roasted beef sirloin, caramelised onions & leeks, mustard jus (GF, DF)
- Lemon chicken thighs, herb couscous, crispy shallots (DF)
- Steamed fish fillets, spinach, red capsicum & caper butter sauce (GF)

Sides_

- Seasonal vegetables (GF, DF, V, VG)
- Gourmet potatoes w/ garlic & thyme (GF, DF, V, VG)

Desserts_

- Bitter-sweet chocolate tart selection & pistachio (V)
- Selection of cheesecakes (V)
- Lemon meringue pie (V)
- Fresh fruit salad (GF, DF, V, VG)

2 course set menu_
\$55 per person_ select one per course

3 course set menu_
\$65 per person_ select one per course

2 course alternate serve_
\$59 per person_ select two per course

3 course alternate serve_
\$69 per person_ select two per course

2 course
\$64 per person_ choice of two per course

3 course
\$74 per person_ choice of two per course

Minimum 10 guests

A "silent" vegetarian option will be available w/ all plated meals.

Supplement charges will apply for additional options within each course

\$4 for each alternate drop per course

\$7 for each additional entrée choice

\$10 for each additional main course choice

\$7 for each additional dessert choice

Plated Dinner_

Entrée_

- Beef carpaccio, pure olive oil, baby capers, grana padano, shaved radish (GF)
- Salt roasted duck breast, orange and lime salsa (GF, DF)
- Goats cheese & herb tartlet, dressed greens, balsamic reduction (V)
- Pancetta, pea & cheddar tart, smoked tomato sauce, roquette (V available)
- Chicken liver parfait, pear & ginger chutney, charred sourdough

Main_

- Confit duck leg, pickled cabbage, compressed apple, bigarade jus (GF, DF)
- Seared lamb back strap, hazelnut crumb, smoked eggplant, focaccia crisp (GF, DF available)
- Roast chicken breast, potato rosti, pepperonata, saffron yoghurt (GF)
- Chicken supreme w/ roasted vegetable couscous, vine tomato & preserved lemon vinaigrette (DF)
- Crispy skin Akaroa salmon, sautéed green beans, trussed cherry tomatoes, salsa verde (GF, DF)

Dessert_

- Lemon white chocolate cheesecake with berry coulis (V)
- Opera slice w/ vanilla bean anglaise & bitter chocolate shards (V)
- Cardamon pannacotta w/ poached pear & double cream (V, GF)
- Crème brulee w/ biscotti – flavour made to suit your menu (V)



Canapés_

3 canapés choices
\$16 per person

5 canapés choices
\$22 per person

6 canapés choices
\$26 per person

Cold Selection

- Chicken liver pâté w/ cranberry sauce (GF available)
- Sun dried tomato pikelets & caramelised onion (GF & V available)
- Smoked salmon tartlet, fried capers, pickled cucumber (GF available)
- Home smoked beef, pickled onion & gherkin on toasted ciabatta (DF)
- Crepes filled w/ chicken, asparagus & cream cheese (GF available)
- Baguette crostini topped w/ venison & fruit chutney

Hot Selection

- Vegetarian samosa w/ natural yoghurt dressing (V)
- Thai fish & shrimp cakes w/ sweet chilli sauce (DF)
- Tempura asparagus, onion & chive aioli (DF, V)
- Feta & spinach individual quiche (V)
- Buffalo chicken wings w/ spicy sauce (DF)
- Char-grilled lamb fillet, mint pesto & cashew nut feta (GF)

Sweet Selection

- Assorted macaroons (V)
- Truffle variation (V)
- Chocolate cup variation (V)
- Chocolate filled beignets, lemon curd (V)



Platters_

Cold options_

Mediterranean_

\$60 per platter

- Grilled seasonal vegetables, cured meats, fried tortillas, Turkish bread and dips (DF & V available)

Taste of Japan_

\$75 per platter

- Selection of assorted sushi, nigiri and salmon sashimi (GF, DF, V, VG)

NZ cheese_

\$95 per platter

- Brie, blue and cheddar with crackers and dried fruits (GF & V available)

Something sweet_

\$65 per platter

- Chef's selection of mini cakes and petit fours (V)

Hot options_

Asian delights_

\$60 per platter

- Thai spring rolls, vegetarian curried samosas and Szechuan spiced chicken bites (V available)

Kiwi favourites_

\$70 per platter

- Assorted mini pies, quiches and sausage rolls with tomato chutney (V available)

Taste of Middle East_

\$75 per platter

- Lamb kofta, chicken shish kebab, grilled haloumi and crispy pita bread with babaganoush (GF & V available)

Beverage Packages_

Novotel Silver Package

Per Person
One hour - \$22.0
Two hours - \$30.0
Three hours - \$36.0
Four hours - \$42.0
Five hours - \$47.0

Novotel Gold Package

Per Person
One hour - \$29.0
Two hours - \$35.0
Three hours - \$41.0
Four hours - \$47.0
Five hours - \$55.0

Novotel Platinum Package

Per Person
One hour - \$34.0
Two hours - \$42.0
Three hours - \$49.0
Four hours - \$55.0
Five hours - \$61.0

Novotel Silver Package

- Brancott Estate Sauvignon Blanc, Pinot Gris, Merlot, Pinot Noir
- Speights Ale, Super Quench Low Carb Pilsner
- Orange Juice, soft drinks and mineral water

Novotel Gold Package

- Brancott Estate Brut Cuvee
- The Ned Pinot Gris
- Satellite Sauvignon Blanc
- Pencarrow Chardonnay
- Lake Chalice "The Falcon" Pinot Noir
- Brookfields Ohiti Estate Cabernet Sauvignon Blanc
- Speights Ale, Super Quench Low Carb Pilsner
- Isaacs Cider
- Orange Juice, soft drinks and mineral water

Novotel Platinum Package

- Makers Anonymous Prosecco
- M.Chapoutier Pays d'Oc Rose
- Pencarrow Chardonnay
- Satellite Sauvignon Blanc
- Main Divide Merlot Cabernet
- The Last Shepard Syrah
- Lake Chalice "The Falcon" Pinot Noir
- All tap beers, Isaacs Cider
- Orange Juice, soft drinks and mineral water

At Novotel Christchurch Cathedral Square, we have selected a special list of wines that have been tailored to suit the menu we offer.

Our beverage packages include New Zealand sparkling wines, white & red wine, regular & low alcohol beers. You can also add spirits, cocktails & after dinner port to your selected package.

Please discuss your selection & requirements w/ your event manager

4_ Time out_



Activities & Team Building_

In town_

Pinot & Picasso_

- Sip & Paint Experience: This unique, interactive art session will not only promote creativity within your team but also provide a relaxing environment to unwind. Participants can enjoy a glass of Pinot as they are guided by a professional artist to create their own masterpieces. This activity requires no prior art experience and can provide a fun and laid-back atmosphere for team building.

Code Breakers_

- Escape Rooms: Escape rooms are an excellent way to encourage problem-solving, communication, and collaboration in a team. In Code Breakers, teams are locked in a themed room and must solve puzzles, find clues, and use their collective brainpower to escape before time runs out. This immersive, hands-on experience will test your team's ability to work under pressure and to work together efficiently.

Riverside Kitchen_

- MasterChef Experience: At the Riverside Kitchen, your team can engage in a competitive cooking experience similar to the popular TV show MasterChef. Participants are split into groups, given ingredients and a time limit, and challenged to create a delicious dish. This activity not only encourages teamwork but also enhances communication, time management skills, and creativity.

Holey Moley Golf Club_

- City Mini Putt: This is not your regular mini-golf course. At Holey Moley Golf Club, teams can engage in a friendly competition in a unique, creatively-themed mini-golf course right in the city. This activity is a great way to incorporate light-hearted fun into your team-building while encouraging communication and strategy. Plus, it's a good opportunity to enjoy a casual, social atmosphere with a bit of friendly competition.



Activities & Team Building_

A bit further out_

Velocity Karts_

- At Velocity Karts, your team can experience the unique thrill of Blokart sailing and Driftkart racing. Blokarts are compact and easy-to-handle land yachts, whereas Driftkarts are specially designed drift go-karts that allow you to feel the rush of drifting. These activities require coordination, quick decision-making, and teamwork to achieve the fastest time on the track, making it an ideal activity for team-building.

Christchurch Adventure Park_

- This is an outdoor lover's paradise, offering an array of activities to get your team's adrenaline pumping. It's home to New Zealand's longest chairlift that carries riders, sightseers, and their bikes to the top of the Port Hills with stunning views of the city, Canterbury Plains out to the Pacific Ocean. From mountain biking, ziplining to hiking trails, the park provides various opportunities for team-building. Teams can challenge each other in friendly mountain bike races, work together to navigate the hiking trails, or build trust and camaraderie through a thrilling zipline experience.