

S O F I T E L

S O F I T E L
MELBOURNE ON COLLINS



Hotel Information Kit | 2024



Table of Contents

- The Sofitel Story
- A Hotel for the Arts
- Accommodation Rooms
- Dining & Drinking Options
- Magnifique Meetings
- Location & Parking





The Sofitel Story

Collins Place & Hotel

Designed in about 1970 by I.M.Pei and Partners, and finally completed in 1981, Collins Place building, where Sofitel Melbourne On Collins is located, was Melbourne's first and Australia's largest mixed use project, including basement car-parking, a shopping plaza with professional suites, cinemas and a nightclub in the lower levels, and offices and a high-rise hotel.

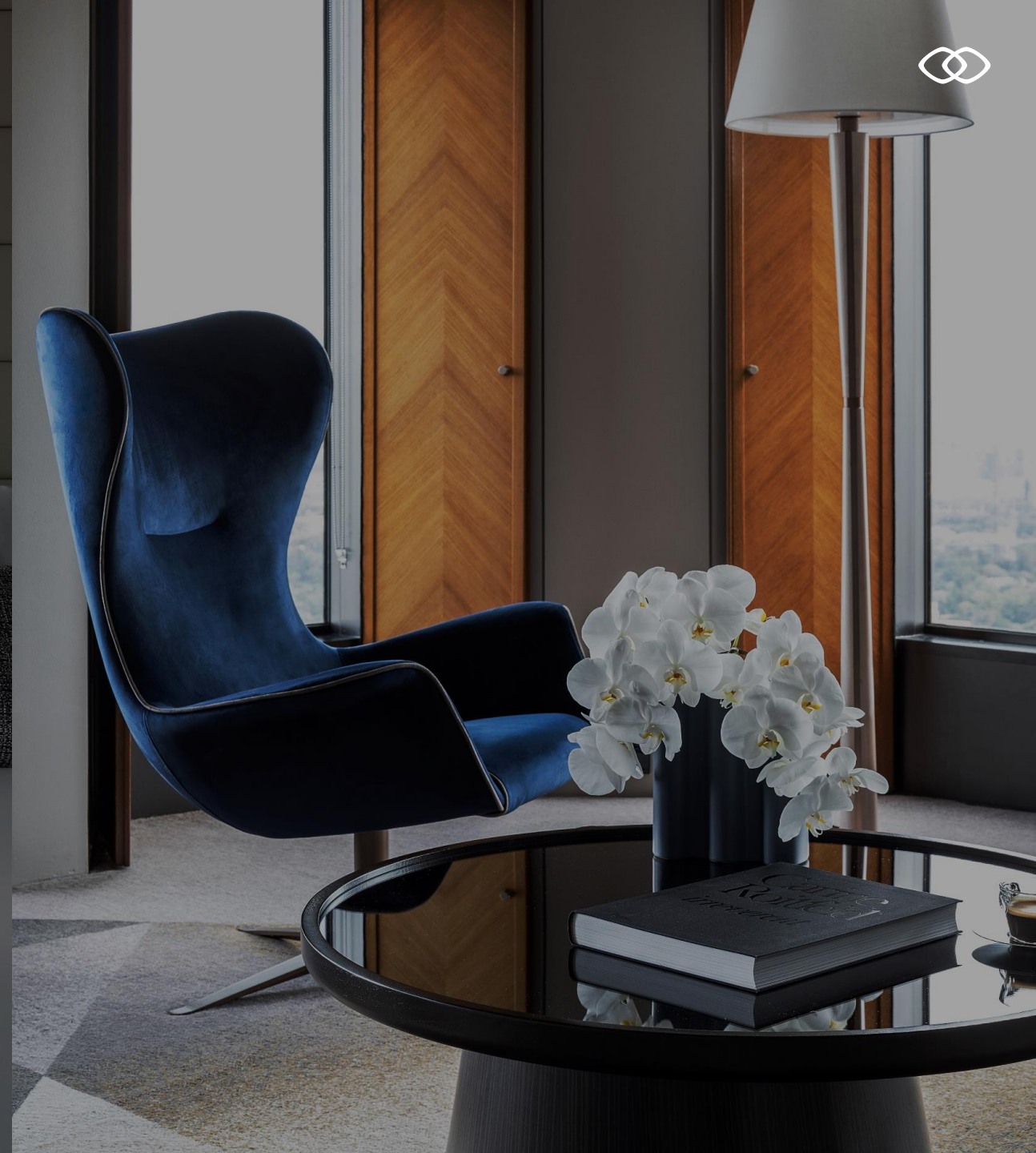
I.M.Pei and Partners also designed The Louvre Pyramid (Pyramide du Louvre) in Paris, France. The large pyramid serves as the main entrance to the Louvre Museum. Completed in 1989, it has become a landmark of the city of Paris.

Sofitel Melbourne On Collins as a *Hotel for the Arts*

Each Sofitel draws inspiration from local culture & tradition while celebrating innovation and the French art-de-vivre to offer a one-of-a-kind, luxurious hotel.

From design details to exhibitions and events, discover what makes this Hotel for the Arts so unique.

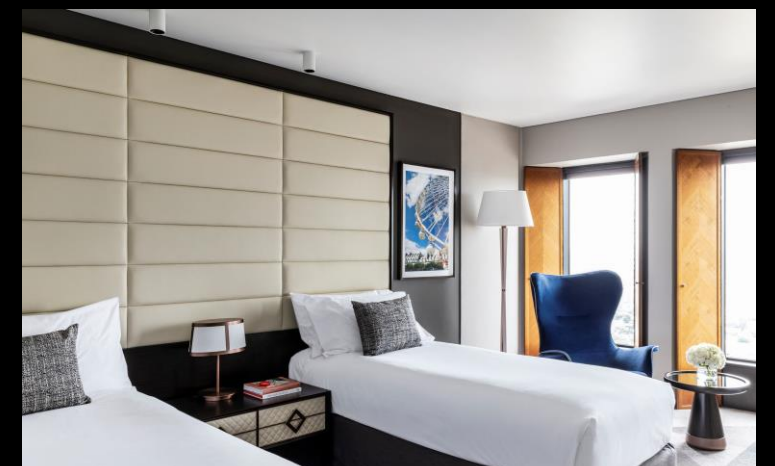
- 363 accommodation rooms & suites
- 12 integrated meeting & event venues
- No35 Restaurant with breathtaking city views
- The Atrium On 35 bar serving classic & signature cocktails





Accommodation Rooms

Where magnifique views await



Superior Rooms

Superior King & Superior Twin | City View or Bay & River View



Deluxe King Room





Luxury Rooms

Luxury King Corner & Luxury Club



Luxurious Suites

Junior Suite, Prestige Suite, Deluxe Suite, Ambassador Suite



Celestial Suites

Imperial Suite



Celestial Suites

Opera Suite

Savour every moment

DINING & DRINKING OPTIONS

No35 Restaurant

Impress with breathtaking views & modern cuisine. We are all about guilt-free indulgence as we blend food & wine with personalised service that will give you a joyous gastronomic experience.

The Atrium on 35 Bar

An elegant quintessential spot to indulge in our Signature Cocktails & Champagne.

Club Sofitel

Our elevated Club Lounge is the tallest in Melbourne where you get to experience fine food & wine amongst the best views of the CBD.



Make your meetings *magnifique*

CONFERENCE & EVENTS

Elevate your events to a pinnacle of success at Sofitel Melbourne On Collins, where every detail is curated to transform gatherings into extraordinary experiences.

Acclaimed as one of Melbourne's leading integrated hotel conference venues, we offer meticulously designed ballrooms & conference rooms that provides versatility and elegance, adaptable to your event needs.

Located in the Paris-end of Collins street, the hotel is right in the heart of premier shopping, dining, and theatre district of the city.



Location & Parking

Located at the Paris-end of Collins Street, Sofitel Melbourne on Collins is in the heart of premier shopping, dining and theatre district.

VALET PARKING

In-House Guest Parking

Casual Valet Parking

Subject to availability

PUBLIC CAR PARKING

First Parking – Collins Place Car Park
28 Flinders Lane, Melbourne VIC 3000

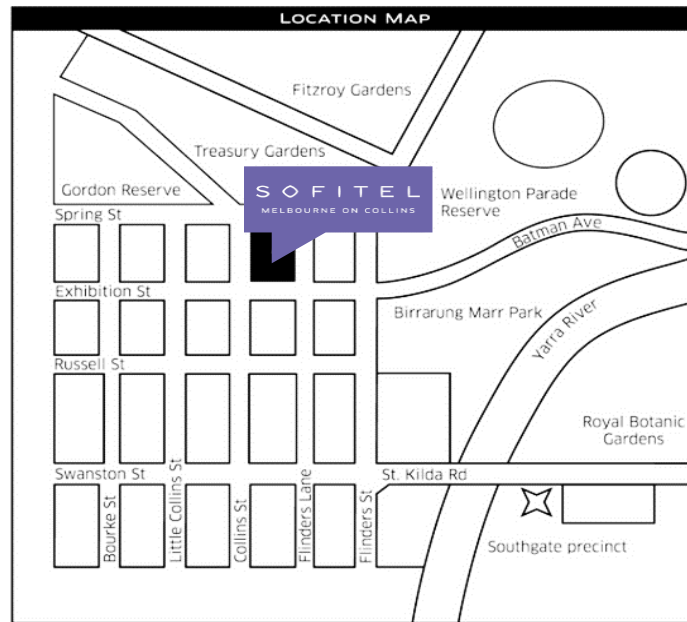
PUBLIC TRANSPORT TO HOTEL

Nearest train stations:

- Flinders Street Station (Corner of Flinders Street and Swanston Street)
- Parliament Station (Corner of Spring Street and Macarthur Street)

Nearest tram stop:

- Located directly outside the Hotel Driveway (corner of Collins Street and Spring Street)





S O F I T E L
MELBOURNE ON COLLINS

25 Collins Street, Melbourne VIC 3000 Australia

TEL: +6139653 0000 FAX: +61 (3) 9653 7733

EMAIL: h1902@sofitel.com

<https://www.sofitel-melbourne.com.au>