

MERCURE MEETINGS

MEETINGS & EVENTS KIT

HOP & HUDDLE 417

| | |
|-------------------|--------------------|
| MONDAY - THURSDAY | 6.00 AM - 10.00 AM |
| FRIDAY | 6.00 AM - LATE |
| SATURDAY | 7.00 AM - LATE |
| SUNDAY | 7.00 AM - 10.00 AM |

SCAN HERE TO PRE-BOOK YOUR MEETING KIT

HOP & HUDDLE OPEN

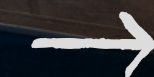
| | |
|-------------------|--------------------|
| MONDAY - THURSDAY | 8.00 AM - 10.00 AM |
| FRIDAY | 6.00 AM - LATE |
| SATURDAY | 7.00 AM - LATE |
| SUNDAY | 7.00 AM - 10.00 AM |

@HOPANDHUDDLE

MERCURE

HOTEL

PERTH ON HAY



WELCOME TO MERCURE PERTH ON HAY

The newly refurbished Mercure Perth on Hay is located near the beautiful Swan River in the heart of Perth CBD. With activities and attractions including the Perth Mint, Kings Park, shopping precincts, and funky rooftop bars all within close proximity.

Our 127 hotel rooms fitted with smart TV's, air conditioning, a work desk, mini-fridge, tea and coffee making facilities, bathroom amenities and comfortable beds and pillows, for a good night's sleep.

The hotel offers a self check-in / check-out facilities. Our 24-hour reception staff can offer friendly advice about the local area, to help you make the most of your time in this beautiful city.

The newest addition to the hotel, Hop & Huddle, is a vibrant bar & eatery with indoor and outdoor seating, and features a delicious food and beverage menu with local sips and smoked meats. It's a perfect spot in the heart of Perth to gather with friends or colleagues.



MERCURE MEETINGS

INTRODUCTION **CARBON NEUTRAL MEETINGS** MINDSPACES MEETING FACILITIES HOTEL FACILITIES FLOOR PLANS CAPACITY CHART DAY PACKAGES

AUDIO VISUAL & STAGING SERVICES MEETING PLANNER CONTACTS

CARBON NEUTRAL MEETINGS

MINDFUL MEETINGS BY MERCURE HOTELS ARE
CARBON NEUTRAL WITH A COMMITMENT TO MAKING
THE WORLD A BETTER PLACE.
TO FIND OUT MORE VISIT WWW.MERCURE.COM

- Your Mindful Meeting will be carbon neutral
- Greenhouse gases produced during the meeting are offset by funding renewable energy sources through the Carbon Reduction Institute
- We fund the cost of the offsets and do not pass them on to you
- Our hotel follows Accor's global environmental charter with priority actions identified to reduce energy and water consumption and improve waste management and recycling



MERCURE MEETINGS

INTRODUCTION CARBON NEUTRAL MEETINGS **MINDSPACES** MEETING FACILITIES HOTEL FACILITIES FLOOR PLANS CAPACITY CHART DAY PACKAGES

AUDIO VISUAL & STAGING SERVICES MEETING PLANNER CONTACTS

MINDSPACES



MERCURE MINDFUL MEETING ROOMS INCLUDE:

- Room arrangements designed to facilitate collaboration and connection
- Access to natural light and fresh air where possible, with multiple and versatile spaces throughout the hotel
- Reusable water jugs, to minimise the use of single-use plastic and unnecessary packaging
- Room diffusers to facilitate a calm and relaxed environment



MEETING FACILITIES

Mercure Perth on Hay offers meeting planners a great central location, flexible rooms and set up styles, a variety of food and beverage options, as well as attractive and competitive pricing.

Inclusions/features include:

- Easy wheelchair access
- Room hire
- Lift access to level 1 meeting rooms
- Dedicated event coordinator
- Air conditioning
- Wi-Fi
- Audio and video aids including microphone, data projector and screen, lectern and TV
- Whiteboard and flipchart
- Pads, pens, mints and iced water
- Flexible and tailored food and beverage options for pre, during and post meeting requirements
- Nespresso or barista made coffee



MERCURE MEETINGS

INTRODUCTION CARBON NEUTRAL MEETINGS MINDSPACES MEETING FACILITIES **HOTEL FACILITIES** FLOOR PLANS CAPACITY CHART DAY PACKAGES

AUDIO VISUAL & STAGING SERVICES MEETING PLANNER CONTACTS

HOTEL FACILITIES



In addition to a convenient location and modern guest rooms, Mercure Perth On Hay offers a range of thoughtful amenities, designed to make your stay as comfortable as possible.

Facilities includes:

- Express check-in and check-out kiosks
- On-site Hop & Huddle restaurant and bar
- Wi-Fi
- Air conditioning
- Spacious accommodation rooms with ensuite bathrooms
- 24-hour front desk
- Daily housekeeping
- On-site parking (cost)
- In-room dining
- Easy access to public transport

Our helpful staff is on hand to assist you with anything you may need during your visit.

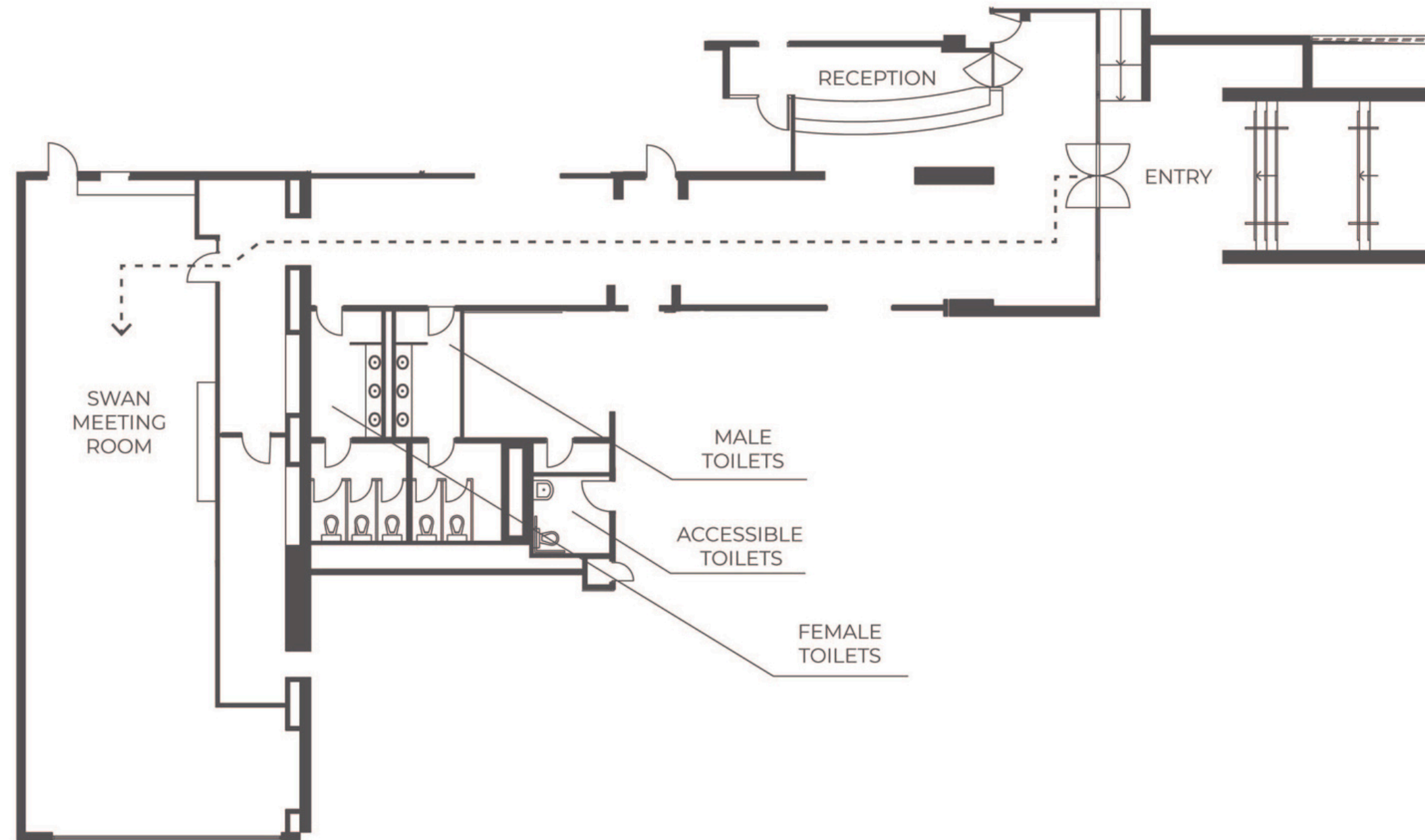


MERCURE MEETINGS

[INTRODUCTION](#) [CARBON NEUTRAL MEETINGS](#) [MINDSPACES](#) [MEETING FACILITIES](#) [HOTEL FACILITIES](#) **[FLOOR PLANS](#)** [CAPACITY CHART](#) [DAY PACKAGES](#)

[AUDIO VISUAL & STAGING SERVICES](#) [MEETING PLANNER](#) [CONTACTS](#)

GROUND FLOOR PLAN: SWAN ROOM

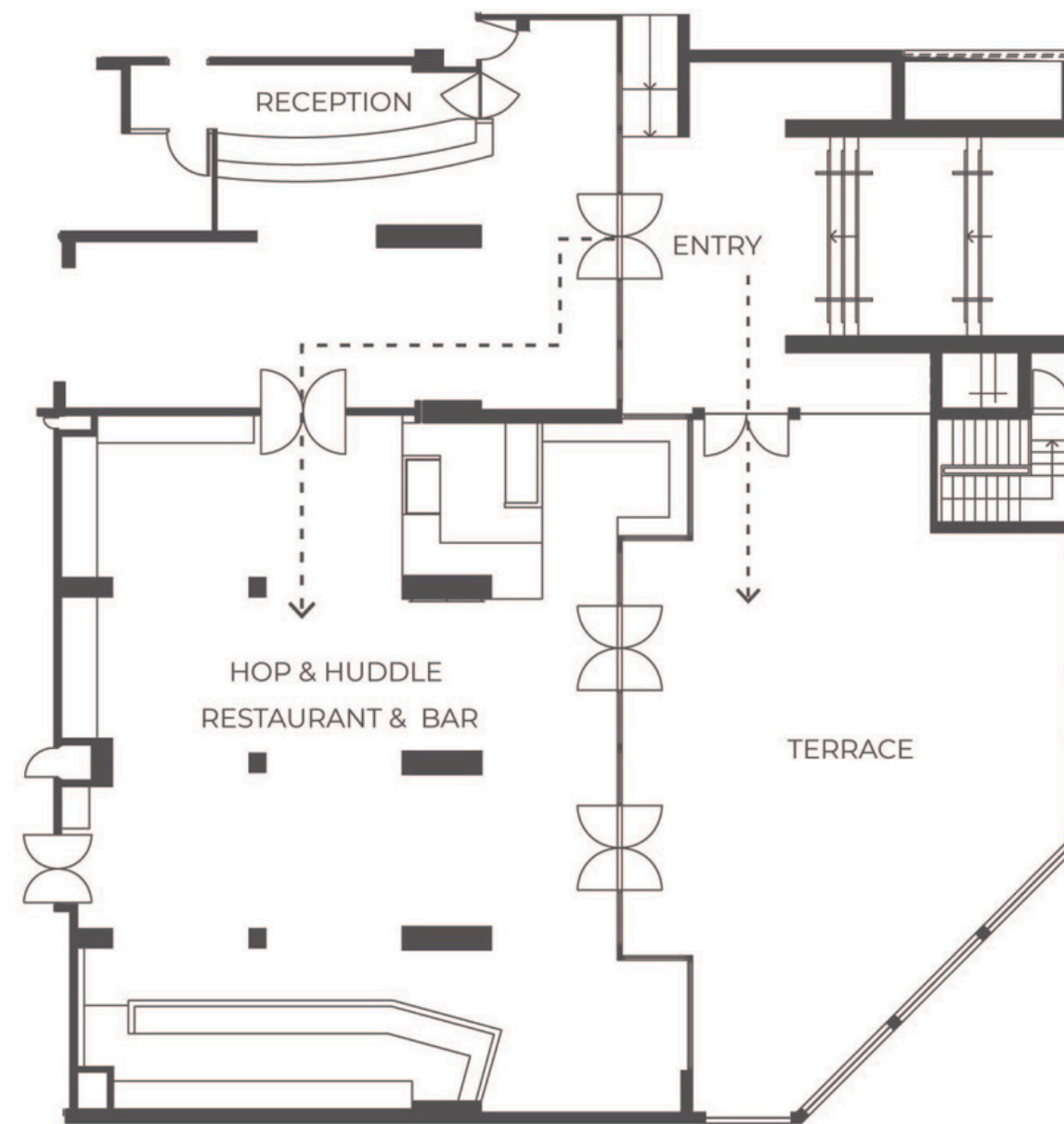


MERCURE MEETINGS

INTRODUCTION CARBON NEUTRAL MEETINGS MINDSPACES MEETING FACILITIES HOTEL FACILITIES **FLOOR PLANS** CAPACITY CHART DAY PACKAGES

AUDIO VISUAL & STAGING SERVICES MEETING PLANNER CONTACTS

GROUND FLOOR PLAN: RESTAURANT AND TERRACE

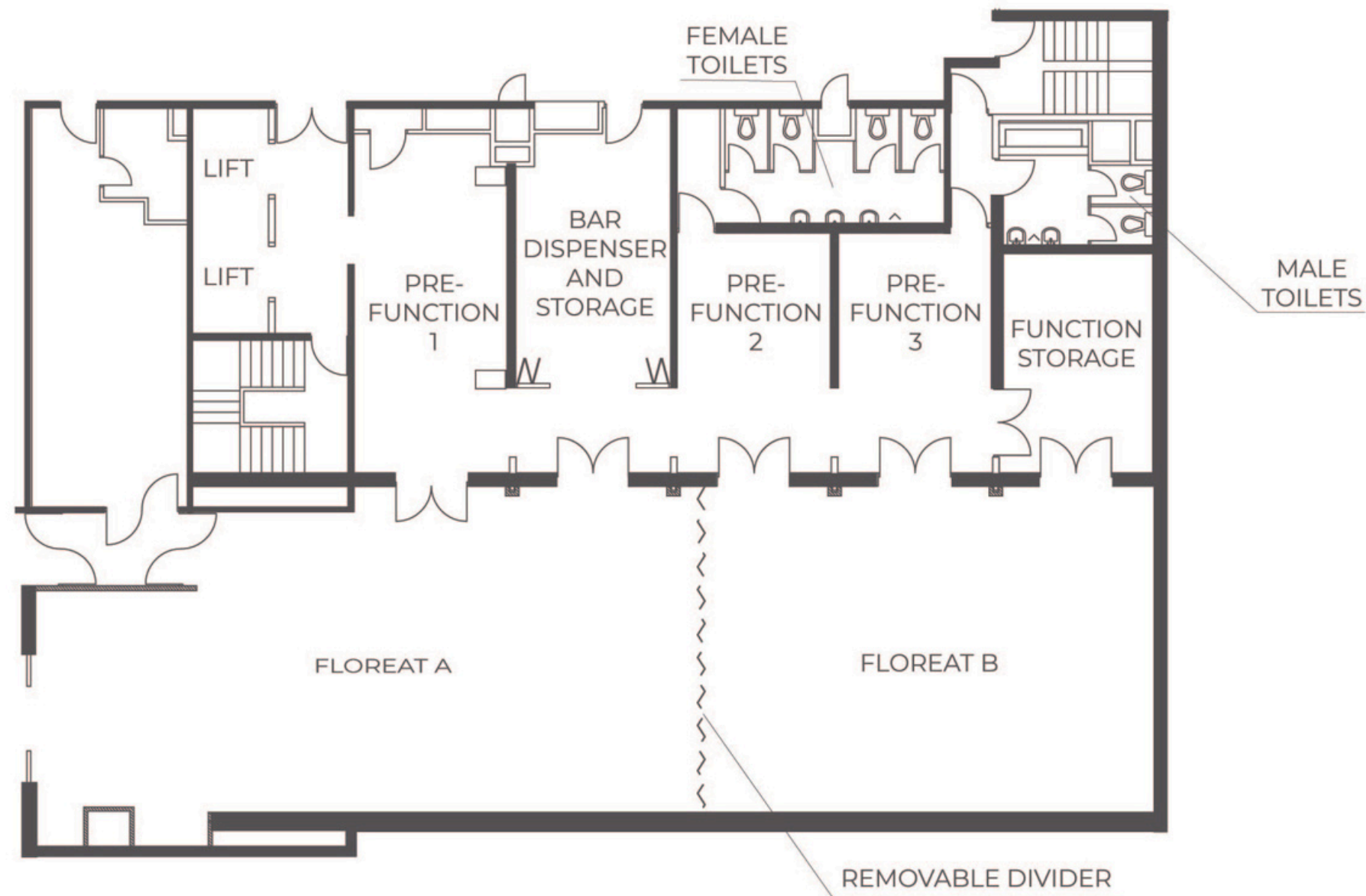


MERCURE MEETINGS

INTRODUCTION CARBON NEUTRAL MEETINGS MINDSPACES MEETING FACILITIES HOTEL FACILITIES **FLOOR PLANS** CAPACITY CHART DAY PACKAGES

AUDIO VISUAL & STAGING SERVICES MEETING PLANNER CONTACTS

L1 FLOOR PLAN: FLOREAT A AND FLOREAT B CONFERENCE ROOMS



MERCURE MEETINGS

INTRODUCTION CARBON NEUTRAL MEETINGS MINDSPACES MEETING FACILITIES HOTEL FACILITIES FLOOR PLANS **CAPACITY CHART** DAY PACKAGES

AUDIO VISUAL & STAGING SERVICES MEETING PLANNER CONTACTS

CAPACITY CHART

| VENUES | ROOM ARRANGEMENTS OPTIONS WITH MAXIMUM CAPACITY | | | | | | |
|-----------------------------|---|---------|----------|------------|------------|---------|---------|
| | THEATRE | BANQUET | COCKTAIL | CLASS ROOM | BOARD ROOM | U-SHAPE | CABARET |
| FLOREAT ROOM (156 M2) | 140 | 120 | 170 | 50 | 38 | 34 | 80 |
| FLOREAT A (100 M2) | 80 | 60 | 100 | 30 | 20 | 30 | 40 |
| FLOREAT B (56 M2) | 50 | 60 | 70 | 24 | 18 | 24 | 24 |
| VICTORIA BOARD ROOM (20 M2) | -- | -- | -- | -- | 12 | -- | -- |
| SWAN ROOM (80 M2) | 60 | 50 | 80 | 24 | 18 | 24 | 30 |
| TERRACE (80 M2) | -- | -- | 80 | -- | -- | -- | -- |



DAY DELEGATE PACKAGES

MINIMUM GROUP OF 20 DELEGATES

FULL DAY PACKAGE \$70 PER PERSON | HALF DAY PACKAGE \$60 PER PERSON

WHAT IS INCLUDED

CATERING ON THE DAY:

MORNING TEA

As a great way to start any day: this include variety of teas and coffees, milk and sweets. Served in the pre-function area on arrival.

THE LUNCH TABLE

Served in the pre-function area assortment of sandwiches, one chef's selection of hot item, salads, fresh seasonal fruit, cheese and options of beverages. Delegates to mingle and enjoy lunch whilst networking. Buffet on request with minimum 25 people required.

AFTERNOON TEA

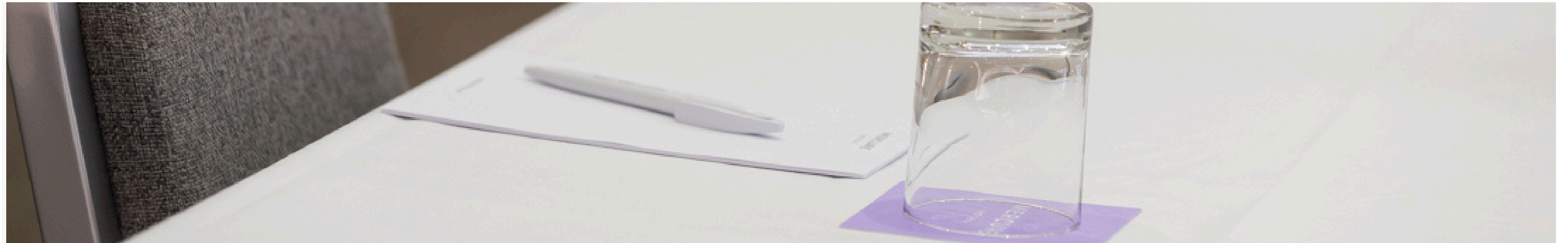
Served in meeting room: light snacks with teas and coffees to keep you moving.

OTHER INCLUSIONS:

- Full or half day room hire cost (depending on the package chosen) with the room arrangements of your choice.
- Complimentary Wi-Fi.
- Audio and visual equipment including projector, a screen and a flip chart.



PACKAGE UPGRADES



- Buffet lunch served in the pre-function area + \$15 per person
- 1 hour canape package \$22 per person / 2 hour canape package \$35 per person
- 2 course dinner \$60 per person / 3 course dinner \$70 per person
- 1 hour beverage package \$22 per person / 2 hour beverage package \$40 per person / 3 hour beverage package \$50 per person



AUDIO VISUAL & STAGING SERVICES



Data projector, built in screen, TV and microphone are available on site.

Should you have additional audio visual requirements, we are happy to put you in touch with a local, trusted audio visual provider.

Our experienced team are available to assist with anything else you may need to enhance your meeting or event.



MEETING PLANNER

MAKE EVERY MEETING

rewarding!

- **POINT & PERKS**
Earn 1 Status & 1 Reward point for every 2 EURO spent
- **PAY YOUR WAY**
Use your Reward points to pay up to 15% of your bill
- **MORE POWER TO YOU**
Transfer your Reward point to other members of ALL
- **YOUR POINTS. YOUR CALL**
Redeem them for hotel stays, shopping online and more



CONTACTS

MERCURE PERTH ON HAY

CONTACT DETAILS

417 Hay Street, Perth 6000
+61 (08) 6187 9100
HB973@accor.com

[@MERCUREPERTHONHAY](http://ALL.COM)

SUPPORT TEAM:

Rhane Casillano - Conference & Events Coordinator
Rhane.casillano@accor.com

